

# **CCICH ADVISORY BOARD MTG.**

APRIL 9, 2015, 8:30 - 10:00 AM

# AGENDA

AGENDA ITEM	PRESENTER	DESIRED OUTCOMES
1. Introductions	<i>Teri House, CCICH Chair</i>	<i>Call to order</i>
2. Public Comment		
3. Health Care for the Homeless Update	<i>Alvin Silva, Rachael Birch, Health Care for the Homeless</i>	<i>Board update on HCH program developments.</i>
4. Zero: 2016 Update	<i>Jennifer Baha, Zero: 2016 Coordinator</i>	<i>Board update on Zero: 2016 initiative.</i>
5. Point-in-Time Count Update	<i>Dana Ewing, Evaluator / Planner, Homeless Services; Josh Jacobs, HomeBase</i>	<i>Board update on Point-in-Time Count data to be released at 4/17 CCICH general membership meeting.</i>
6. Committee Reports	<i>Brenda Kain, CCICH Vice Chair</i>	<i>Board update on work by the CoC Governance, Coordinated Assessment, and Performance Measurement Committees.</i>
7. Concord Naval Weapons Station Update	<i>Sophia Lai, HomeBase</i>	<i>Board update on CNWS master developer selection process by City of Concord.</i>
8. Behavioral Health Deputy Director	<i>Lavonna Martin, Chief of Homeless Services</i>	<i>Nomination of a current board member to participate in the selection committee.</i>
9. Pin it	<i>All</i>	<i>Future items of discussion/scheduling to be considered by the Board</i>

## 2. PUBLIC COMMENT

Any comments?



# 3. HEALTH CARE FOR THE HOMELESS UPDATE

Alvin Silva, Rachael Birch

*Board update on HCH program developments.*



## 4. ZERO: 2016 UPDATE

Jennifer Baha, Zero: 2016 Coordinator

*Board update on Zero: 2016 initiative.*

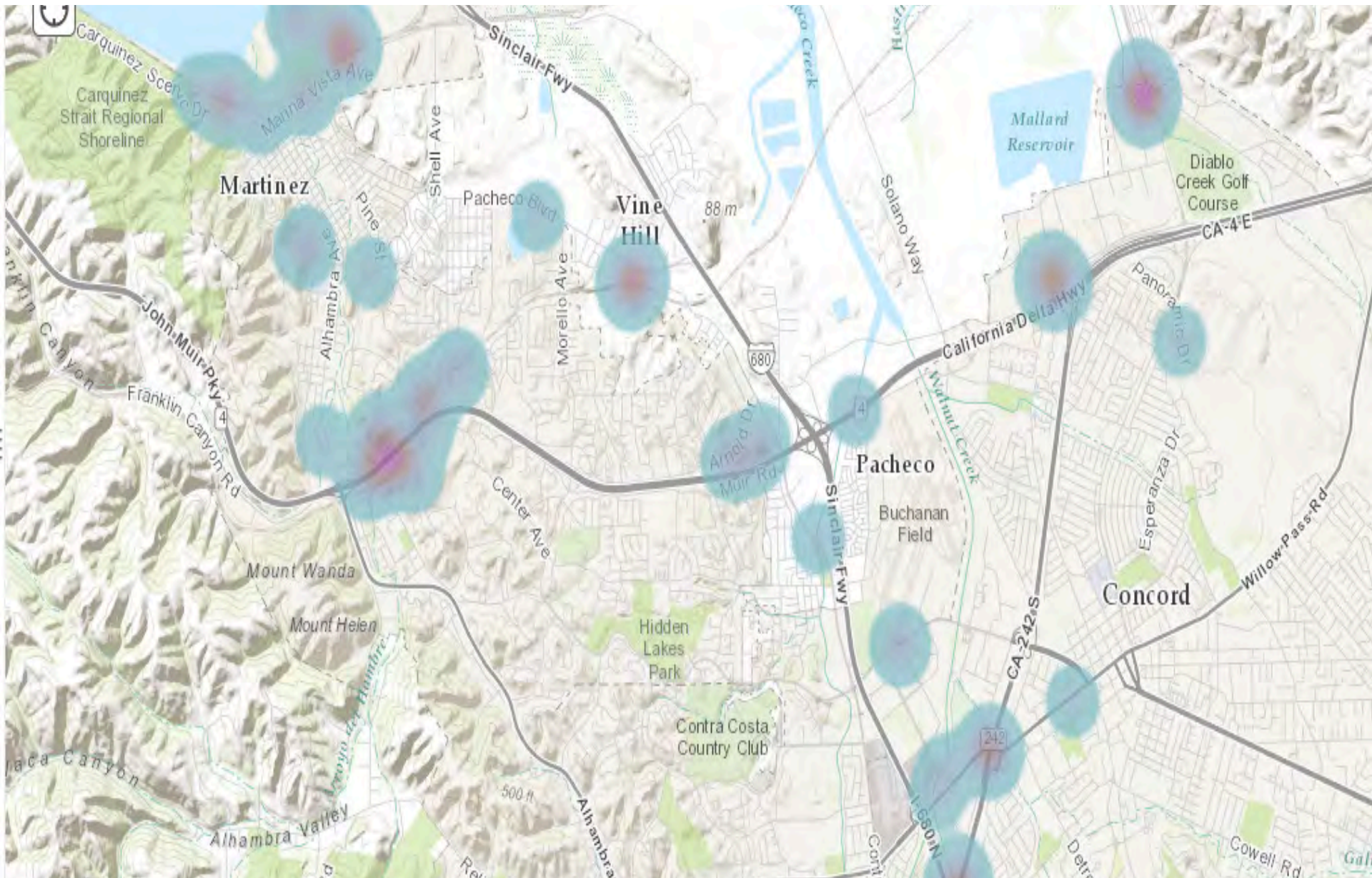
## 5. POINT IN TIME COUNT UPDATE

Dana Ewing,  
Evaluator/Planner, Homeless Services

Josh Jacobs,  
HomeBase

*Board update on Point-in-Time Count data to be released  
at 4/17 CCICH general membership meeting.*

# MAPPING SYSTEM

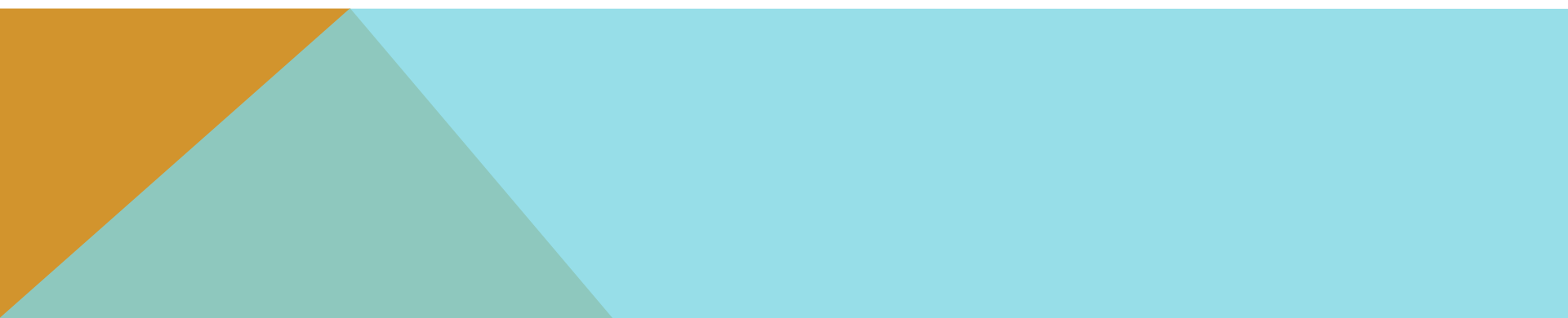


# METHODOLOGY AND FINDINGS

## Methodology

- Sheltered Point in Time Count
- Unsheltered Point in Time Count
  - Street-Outreach Based Count
  - Service-Site Based Count

## Findings

- Comparison to Past Counts: Notable Findings
  - County and City Breakdown
  - Homeless Subpopulation Data
- 



## 6. COMMITTEE REPORTS

Brenda Kain, CCICH Vice Chair

*Board update on work by the CoC Governance,  
Coordinated Assessment, and Performance  
Measurement Committees.*

# COC GOVERNANCE CHARTER AD HOC COMMITTEE

First Meeting: 3/25

Next Meeting: TBD

Regularity: TBD



# EXECUTIVE BOARD MEMBERSHIP

## Area of Representation

Consumer/Consumer Advocate  
Seat\*

Business Representative

Community Member Seat #1

Community Member Seat #2

Community Member Seat #3

Local Government Seat #1

Local Government Seat #2

Health Care

Public Safety

Faith Community

**Homeless Housing Provider**

Behavioral Health Representative

Education and Vocational Services

Nonprofit Homeless Service Provider

Public Housing Provider

*Consumer/Consumer Advocate Alternate Seat\**

The appointees to the Consumer/Consumer Advocate Seat and Alternate Seat should have a lived experience of homelessness.

# COORDINATED ASSESSMENT

First Meeting: 3/9

Next Meeting: 4/13

Regularity: Monthly



# LAUNCHING PHASE 2 OF VI-SPDAT PILOT

## Timeline:

April 1<sup>st</sup> – Shelters

April 15<sup>th</sup> – Site-Based Transitional Housing

May 1<sup>st</sup> – Scattered Site Transitional Housing;  
Outreach Teams; MSCs

# UPDATE ON VI-SPDAT TOOLS AND HMIS

- VI-SPDAT
- VI-SPDAT Family
- Youth VI-SPDAT

# COORDINATED ENTRY

Includes coordinated intake and access, needs assessment, and prioritized placement.



# PERFORMANCE MEASUREMENTS

First Meeting: 3/17

Next Meeting: 4/14

Regularity: Twice monthly (except for April)





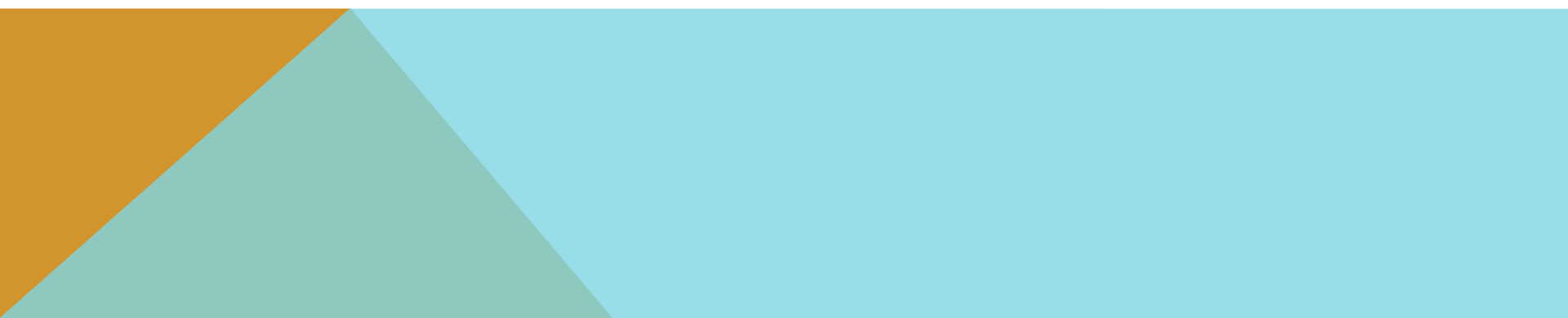
# PERFORMANCE MEASUREMENTS AD HOC COMMITTEE MEETINGS – 3/17 & 3/31

The Committee decided that for Emergency Shelters, the outcomes measured would be:

- 1) Rate of exit from Emergency Shelter to stable housing
- 2) Average length of stay for those exiting from ES to stable housing
- 3) Returns to homelessness within 1 year (for those exiting from ES to stable housing)

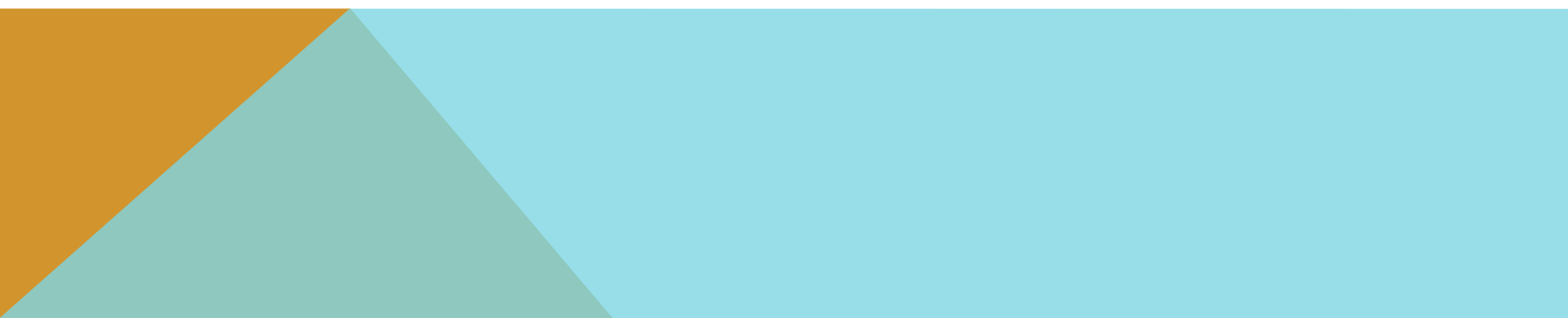
# PERFORMANCE MEASUREMENTS AD HOC COMMITTEE MEETINGS – 3/17 & 3/31 (CTD)

The Committee decided that for Emergency Shelters, the populations measured would be:

- 1) Unaccompanied minors
  - 2) Veterans
  - 3) People with disabilities and seniors (SSI/SSDI/SSA eligible)
  - 4) Everyone else
- 

# PERFORMANCE MEASUREMENTS AD HOC COMMITTEE MEETINGS – 3/17 & 3/31 (CTD)

The Committee decided that for Emergency Shelters, the factors tracked would be:

- 1) Physical disability
  - 2) Mental disability
  - 3) Developmental disability
  - 4) HIV/AIDS
- 

# CURRENT DRAFT OF PERFORMANCE MEASUREMENTS CHART

	ES	TH	RRH	PSH	SO/SSO
Populations	1) Unaccomp. minors 2) Veterans 3) Disabled / Seniors 4) All else	1) TAY 2) Veterans 3) All else	1) Veterans 2) All else	1) All eligible	<i>Homeless vs. non-homeless (to measure prevention?)</i>
Measures	1) Exit to stable housing 2) Average length of stay of #1 3) Returns to HL	1) Exit to stable housing 2) Returns to HL 3) Income increase - earned (TAY / All) - benefits (Vets)	1) Exit to stable housing 2) Returns to HL 3) <i>Ask providers re: length of time homeless if not enrolled at time of assistance</i> 4) Income increase - earned (All) - benefits (Vets)	1) Retention in some PH 2) Exit to other stable housing (for at least 12 months) 3) Income – increase OR maintain - earned (All) - benefits (Vets)	SO: Total placement in other Program Components (and breakdown ES, TH, stable housing)  SSO*: <i>Ask providers re: income</i>  *MSC, SOAR, Crisis Centers

# **PERFORMANCE MEASUREMENT COMMITTEE**

## **MEETING SCHEDULE**

### **MARCH**

*Tuesday, March 17, 2015 10:00-12:00pm*

*Tuesday, March 31, 2015 10:00-12:00pm*

### **MAY**

**Tuesday, May 12, 2015 10:00-12:00pm**

**Tuesday, May 26, 2015 10:00-12:00pm**

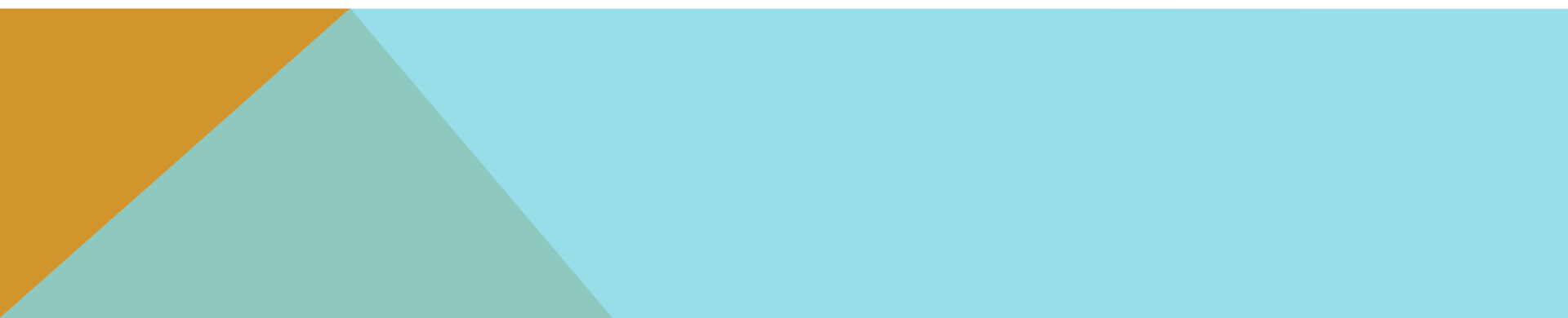
### **APRIL**

**Tuesday, April 14, 2015 10:00-12:00pm**

### **JUNE**

**Tuesday, June 9, 2015 10:00-12:00pm**

**Tuesday, June 23, 2015 10:00-12:00pm**



# 7. CONCORD NAVAL WEAPONS STATION UPDATE

Sophia Lai,  
HomeBase

*Board update on CNWS master developer selection  
process by City of Concord.*

# PROPOSALS

	<i>Units Dedicated to Homeless</i>	<i>Timeline for Implementation</i>
<i>Catellus</i>	260	2017
<i>Lennar</i>	130-260	2021
<i>SunCal</i>	130-260	TBD

# SUNCAL

SunCal is an Irvine, California-based real estate company

- Eight+ decades of commercial development experience
- Among the largest real estate development companies in the United States





# LENNAR

Lennar Corporation (NYSE: LEN) is a publicly traded Fortune 500 company based in Miami, Florida

- Second largest homebuilder in the United States
- The company has extensive experience with military base redevelopment in California
- Capital and financial background to finance these large-scale projects



# CATELLUS

Catellus is a privately held development company based in Oakland, California

- 30 years of experience in commercial and residential development
- Background in transforming former military bases and industrial sites into thriving communities
- Subsidiary of Prologis, a global industrial real estate investment company headquartered in San Francisco, California

## 8. BEHAVIORAL HEALTH DEPUTY DIRECTOR

Lavonna Martin, Chief of Homeless Services

*Nomination of a current board member to participate in the selection committee.*

## 9. PIN IT

Future items of discussion/scheduling to be considered by the Board.

### Reminders:

- Next Full Membership meeting: Friday, April 17<sup>th</sup>
- Next Exec Cmte meeting: Thursday, May 14<sup>th</sup>